



CLIENT TOOLKIT

---

# Transform Diabetes Care® Program Toolkit



## **VALUED CLIENTS**

---

This toolkit is designed to help you build awareness for the Transform Diabetes Care program among your eligible members. Materials include a flyer and letter. You'll also find content that can be emailed, included on your website or inserted into your plan summary documents.

### **Questions?**

Contact your Aetna® Account Team.

**Materials for  
members with  
blood pressure  
monitoring benefit**

## Employee letter



**Extra support  
at no extra cost**

### **Good news — extra support is on the way**

If you're managing diabetes, there's something that can help. Transform Diabetes Care® is a 12-month program that can help keep your diabetes in check. It can help you find the best ways to manage your diabetes and help you live well, stay motivated and achieve your best health.

#### **At no extra cost to you.**

This program gives you customized guidance based on your specific needs. You may get reminders about:

- Refills
- Doctor appointments
- Preventive screenings

Plus, you can get nutrition plans based on what you like and need.

With the **Health Optimizer™ app**, you can monitor your glucose and blood pressure; track and share readings; learn more about diabetes and maintaining a healthy lifestyle; make meals that align with your dietary restrictions; and more. To stay on track, you can get personalized support from Certified Diabetes Care and Education Specialist nurses. That's in addition to the support from your care management program.

### **What to do next**

If you're managing diabetes, you're enrolled automatically. Sit tight — program details are on the way. To learn more about the Transform Diabetes Care program, just call Aetna® Member Services at the number on your member ID card.

Sincerely,

**[CLIENT SIGNOFF]**

**Aetna is the brand name used for products and services provided by one or more of the Aetna group of companies, including Aetna Life Insurance Company and its affiliates (Aetna).**

Aetna is part of the CVS Health® family of companies. Refer to Aetna.com for more information about Aetna plans.

©2021 Aetna Inc.  
34.32.341.1 (5/21)





Transform Diabetes Care

Managing  
diabetes?  
Extra support is here.



**Transform Diabetes Care® is a 12-month program that helps keep your diabetes in check.** It can help you find the best ways to manage your diabetes and help you live well, stay motivated and achieve your best health. At no extra cost to you.

**Support where & when you need it**

This program gives you customized guidance based on your specific needs. You may get reminders about refills, doctor appointments or preventive screenings. Plus, nutrition plans based on what you like and need. With the **Health Optimizer™ app**, you can monitor your glucose and blood pressure; track and share readings; learn more about diabetes and maintaining a healthy lifestyle; make meals that align with your dietary restrictions; and more. To stay on track, you can get personalized support from Certified Diabetes Care and Education Specialist nurses. That’s in addition to the support from your care management program.

**Automatic enrollment**

If you’re managing diabetes, you’re enrolled automatically. Sit tight — program details are on the way.

An illustration of a woman with brown hair wearing a headset with a microphone, representing Aetna Member Services. A small purple heart is visible on her lapel.

**Questions?**

For questions about diabetes, or for additional support, please call Aetna® Member Services at the number on your member ID card.

Aetna is the brand name used for products and services provided by one or more of the Aetna group of companies, including Aetna Life Insurance Company and its affiliates (Aetna).

Visit [Aetna.com](https://www.aetna.com) for a complete list of participating providers in your community. Aetna® is part of the CVS Health® family of companies. For a complete list of other participating pharmacies, log in at [Aetna.com](https://www.aetna.com) and use our provider search tool.

© 2021 Aetna Inc.  
21.03.452.1 (6/21)



# Managing diabetes?

Extra support is here.



The Transform Diabetes Care® program is a 12-month program that helps keep your diabetes in check — at no extra cost to you. It gives you customized guidance based on your specific needs. With the **Health Optimizer™ app**, you can monitor your glucose and blood pressure; track and share readings; learn more about diabetes and maintaining a healthy lifestyle; make meals that align with your dietary restrictions; and more. To stay on track, you can get personalized support from Certified Diabetes Care and Education Specialist nurses. That's in addition to the support from your care management program.

**If you're managing diabetes, you're enrolled automatically. Sit tight — program details are on the way.**

For questions about diabetes, or for additional support, please call Aetna® Member Services at the number on your member ID card.

Aetna is the brand name used for products and services provided by one or more of the Aetna group of companies, including Aetna Life Insurance Company and its affiliates (Aetna). Visit [Aetna.com](https://www.aetna.com) for a complete list of participating providers in your community. Aetna® is part of the CVS Health® family of companies. For a complete list of other participating pharmacies, log in at [Aetna.com](https://www.aetna.com) and use our provider search tool.

©2021 Aetna Inc.  
21.03.453.1 (6/21)

## Employee content

### **Managing diabetes? Extra support is here.**

The Transform Diabetes Care® program is a 12-month program that helps keep your diabetes in check — at no extra cost to you. It gives you customized guidance based on your specific needs. You may get reminders about refills, doctor appointments or preventive screenings. Plus, nutrition plans based on what you like and need. With the **Health Optimizer™ app**, you can monitor your glucose and blood pressure; track and share readings; learn more about diabetes and maintaining a healthy lifestyle; make meals that align with your dietary restrictions; and more. To stay on track, you can get personalized support from Certified Diabetes Care and Education Specialist nurses. That's in addition to the support from your care management program. If you're managing diabetes, you're enrolled automatically. And, program details are on the way.

For questions about diabetes, or for additional support, please call Aetna® Member Services at the number on your member ID card.

#### **LEGAL:**

Your privacy is important to us. Our employees are trained regarding the appropriate way to handle your private health information.

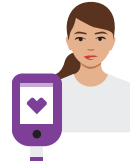
©2021 Aetna Inc.

Microsoft word, copy and paste  
for intranet, emails, newsletters

**Materials for  
members without  
blood pressure  
monitoring benefit**



## Employee letter



**Extra support  
at no extra cost**

### **Good news — extra support is on the way**

If you're managing diabetes, there's something that can help. Transform Diabetes Care® is a 12-month program that can help keep your diabetes in check. It can help you find the best ways to manage your diabetes and help you live well, stay motivated and achieve your best health.

**At no extra cost to you.**

This program gives you customized guidance based on your specific needs. You may get reminders about:

- Refills
- Doctor appointments
- Preventive screenings

Plus, you can get nutrition plans based on what you like and need.

With the **Health Optimizer™ app**, you can monitor your glucose and track and share readings; learn more about diabetes and maintaining a healthy lifestyle; make meals that align with your dietary restrictions; and more. To stay on track, you can get personalized support from Certified Diabetes Care and Education Specialist nurses. That's in addition to the support from your care management program.

### **What to do next**

If you're managing diabetes, you're enrolled automatically. Sit tight — program details are on the way. To learn more about the Transform Diabetes Care program, just call Aetna® Member Services at the number on your member ID card.

Sincerely,

**[CLIENT SIGNOFF]**

**Aetna is the brand name used for products and services provided by one or more of the Aetna group of companies, including Aetna Life Insurance Company and its affiliates (Aetna).**

Aetna is part of the CVS Health® family of companies. Refer to Aetna.com for more information about Aetna plans.

©2021 Aetna Inc.  
34.32.341.1 (5/21)

Employee flyer, vertical format



Transform Diabetes Care

## Managing diabetes?

Extra support is here.



**Transform Diabetes Care® is a 12-month program that helps keep your diabetes in check.** It can help you find the best ways to manage your diabetes and help you live well, stay motivated and achieve your best health. At no extra cost to you.

### Support where & when you need it

This program gives you customized guidance based on your specific needs. You may get reminders about refills, doctor appointments or preventive screenings. Plus, nutrition plans based on what you like and need. With the **Health Optimizer™ app**, you can monitor your glucose and track and share readings; learn more about diabetes and maintaining a healthy lifestyle; make meals that align with your dietary restrictions; and more. To stay on track, you can get personalized support from Certified Diabetes Care and Education Specialist nurses. That's in addition to the support from your care management program.

### Automatic enrollment

If you're managing diabetes, you're enrolled automatically. Sit tight — program details are on the way.



### Questions?

For questions about diabetes, or for additional support, please call Aetna® Member Services at the number on your member ID card.

**Aetna is the brand name used for products and services provided by one or more of the Aetna group of companies, including Aetna Life Insurance Company and its affiliates (Aetna).**

Visit **Aetna.com** for a complete list of participating providers in your community.

Aetna® is part of the CVS Health® family of companies. For a complete list of other participating pharmacies, log in at **Aetna.com** and use our provider search tool.

© 2021 Aetna Inc.  
21.03.454.1 (6/21)



# Managing diabetes?

Extra support is here.



The Transform Diabetes Care® program is a 12-month program that helps keep your diabetes in check — at no extra cost to you. It gives you customized guidance based on your specific needs. With the **Health Optimizer™ app**, you can monitor your glucose and track and share readings; learn more about diabetes and maintaining a healthy lifestyle; make meals that align with your dietary restrictions; and more. To stay on track, you can get personalized support from Certified Diabetes Care and Education Specialist nurses. That's in addition to the support from your care management program.

**If you're managing diabetes, you're enrolled automatically. Sit tight — program details are on the way.**

For questions about diabetes, or for additional support, please call Aetna® Member Services at the number on your member ID card.

Aetna is the brand name used for products and services provided by one or more of the Aetna group of companies, including Aetna Life Insurance Company and its affiliates (Aetna).

Visit [Aetna.com](https://www.aetna.com) for a complete list of participating providers in your community.

Aetna® is part of the CVS Health® family of companies. For a complete list of other participating pharmacies, log in at [Aetna.com](https://www.aetna.com) and use our provider search tool.

©2021 Aetna Inc.  
21.03.455.1 (6/21)

## Employee content

### **Managing diabetes? Extra support is here.**

The Transform Diabetes Care® program is a 12-month program that helps keep your diabetes in check — at no extra cost to you. It gives you customized guidance based on your specific needs. You may get reminders about refills, doctor appointments or preventive screenings. Plus, nutrition plans based on what you like and need. With the **Health Optimizer™ app**, you can monitor your glucose and track and share readings; learn more about diabetes and maintaining a healthy lifestyle; make meals that align with your dietary restrictions; and more. To stay on track, you can get personalized support from Certified Diabetes Care and Education Specialist nurses. That's in addition to the support from your care management program. If you're managing diabetes, you're enrolled automatically. And, program details are on the way.

For questions about diabetes, or for additional support, please call Aetna® Member Services at the number on your member ID card.

#### **LEGAL:**

Your privacy is important to us. Our employees are trained regarding the appropriate way to handle your private health information.

©2021 Aetna Inc.

Microsoft word, copy and paste  
for intranet, emails, newsletters